

FLORIDA
CHAMBER
of Commerce

COVID-19
Resource
Center

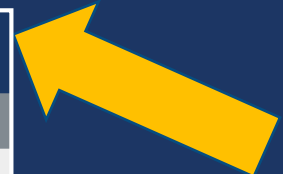
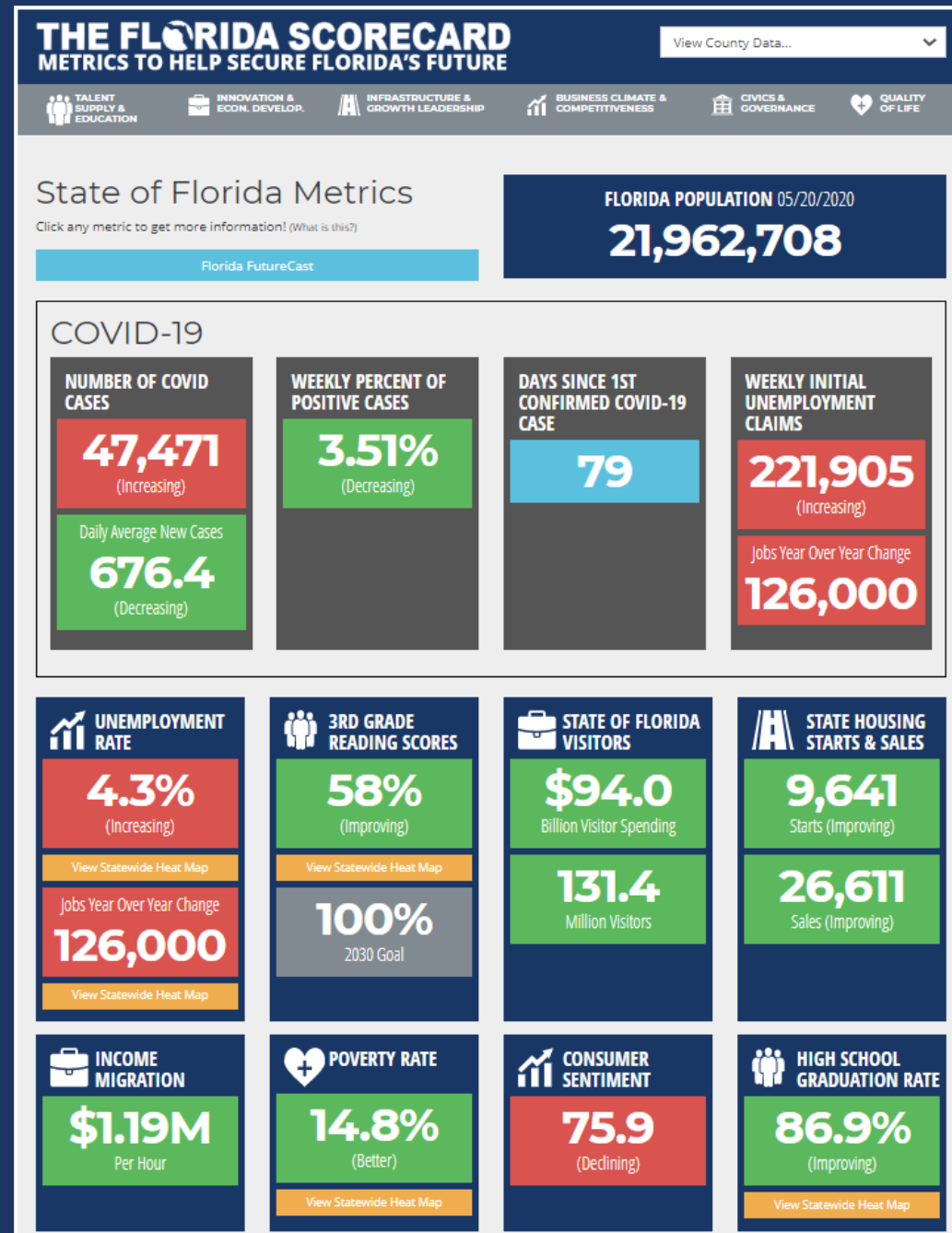
FOLLOW FACTS, NOT FEAR AT WWW.FLORIDACHAMBER.COM/CORONAVIRUS

FLORIDA
CHAMBER
of Commerce

Jerry D. Parrish, Ph.D.
Chief Economist
Florida Chamber Foundation
jparrish@flfoundation.org

www.theFloridaScorecard.org

- New COVID-19 info for Florida and Counties
- Florida is a \$1.11 Trillion Economy
- 20th most Industry Diverse State in the U.S.
- Income Migration of \$1.19 million/hour
- 131.4 million visitors in 2019
- 14.5 million international Visitors
- Data for all 67 Florida Counties



THE FLORIDA SCORECARD

METRICS TO HELP SECURE FLORIDA'S FUTURE

View County Data...



TALENT SUPPLY
& EDUCATION



INNOVATION &
ECON. DEVELOP.



INFRASTRUCTURE &
GROWTH LEADERSHIP



BUSINESS CLIMATE &
COMPETITIVENESS



CIVICS &
GOVERNANCE



QUALITY
OF LIFE

Miami-Dade County Metrics (What is this?)

Miami-Dade County FutureCast

Click any metric to get more information!

COVID-19

NUMBER OF COVID
CASES

16,034
(Increasing)

Daily Average New Cases

190.2
(Decreasing)

WEEKLY PERCENT OF
POSITIVE CASES

6.56%
(Decreasing)

DAYS SINCE 1ST
CONFIRMED COVID-19
CASE

69

WEEKLY INITIAL
UNEMPLOYMENT
CLAIMS

23,442
(Decreasing)

Jobs Year Over Year Change

-58,641



INTERNATIONAL VISITORS

14.547

Million (Improving)

Top 10 Countries



OVERSEAS VISITORS

2nd

(Unchanged)

#1

2030 Goal



IMPORTS & EXPORTS

\$56.0

Billion Exports (Declining)

\$81.7

Billion Imports (Increasing)



TOP 6 IMPORTERS

30.9%

Market Share (Declining)

\$17.70

Billion (Improving)



SEAPORTS CARGO

\$87.3

Billion (Improving)



CONTAINERS (TEUS)

4.10

Million (Improving)



EMPLOYMENT BY FOREIGN COMPANIES

368.1

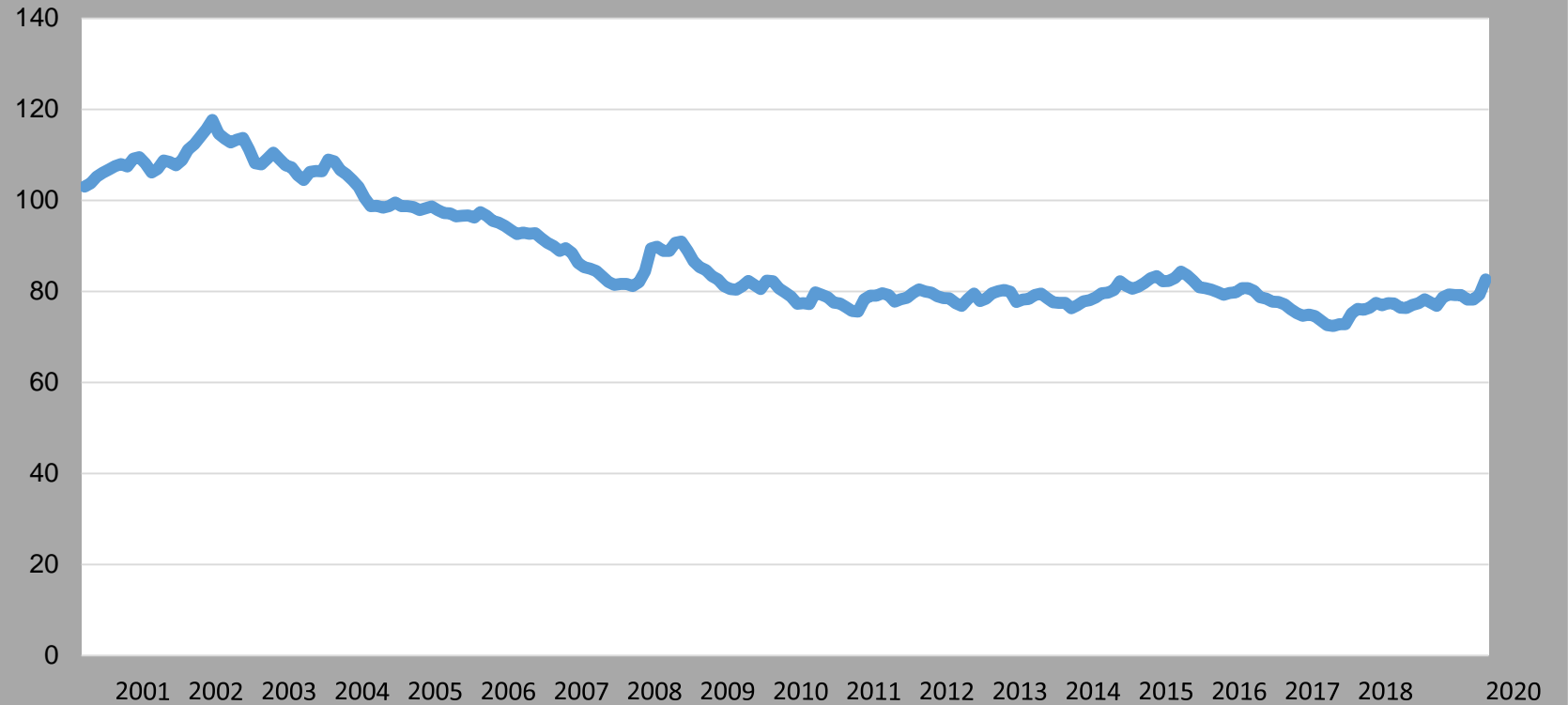
Thousand (Improving)



**FLORIDA
EXCHANGE RATE**

82.65

Florida Trade-Weighted Exchange Rate

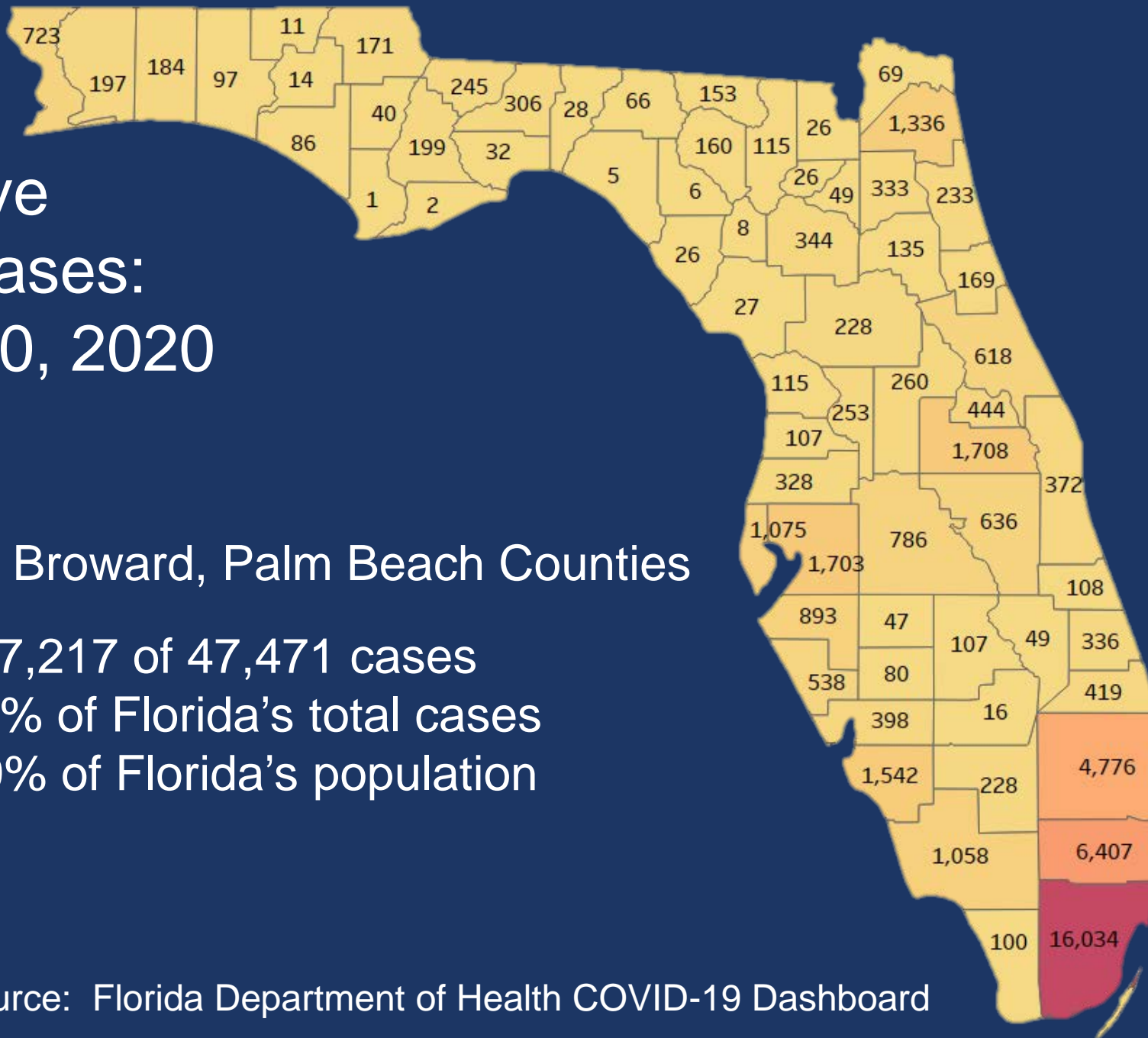


Data Source: Federal Reserve Bank of Dallas

Cumulative COVID-19 Cases: Updated May 20, 2020

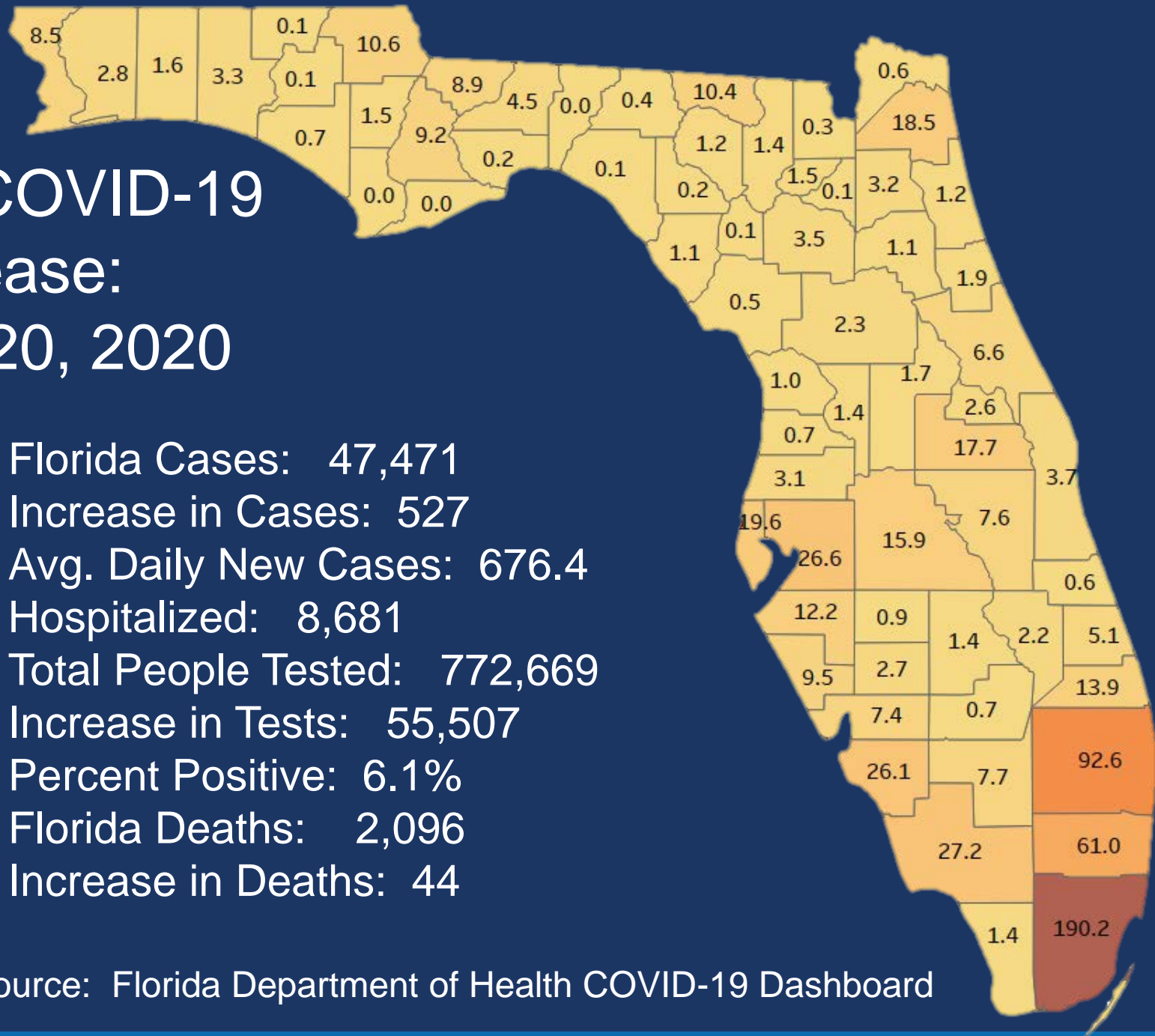
Miami-Dade, Broward, Palm Beach Counties

27,217 of 47,471 cases
57.3% of Florida's total cases
28.9% of Florida's population



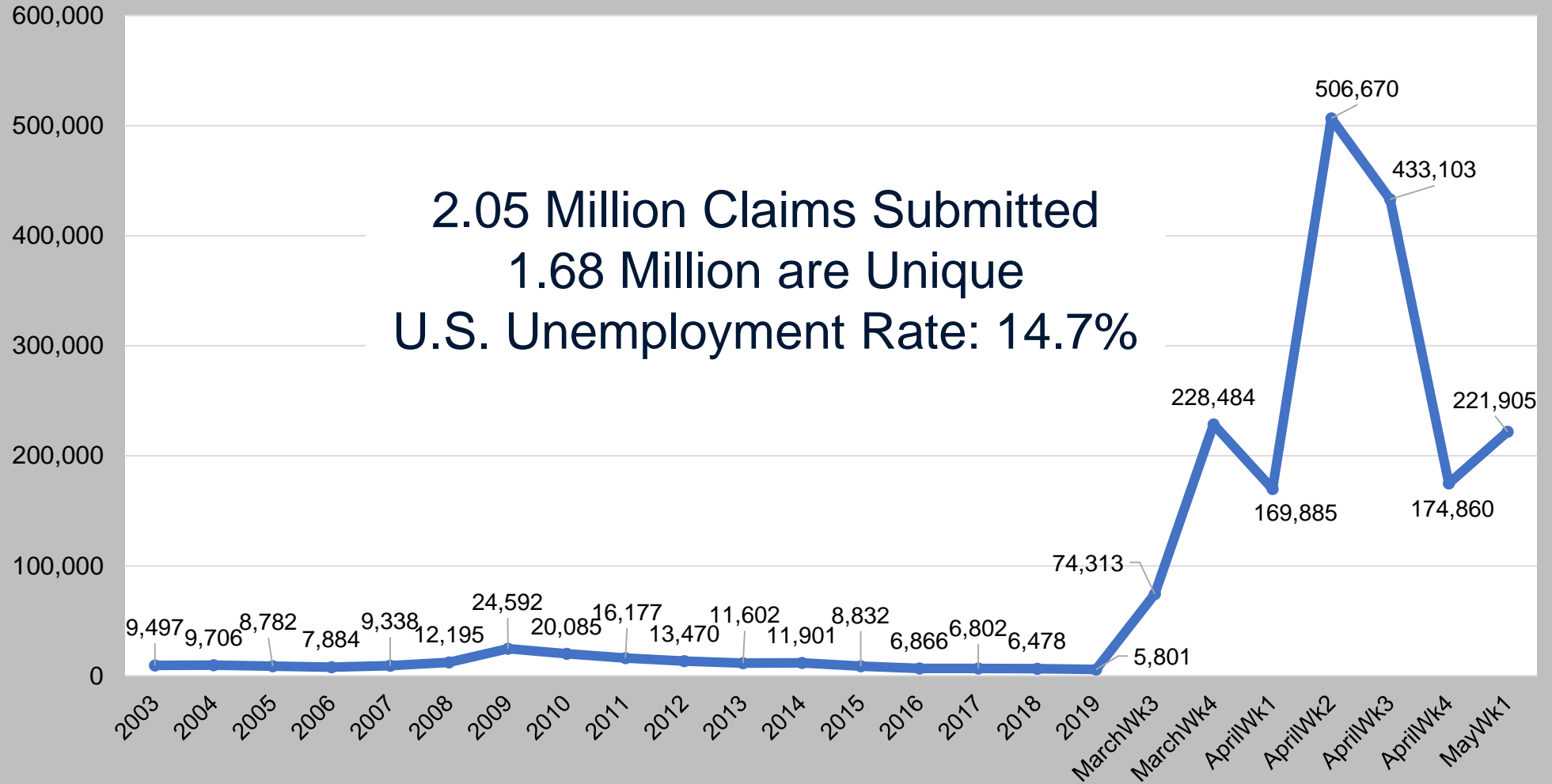
Average Daily COVID-19 Case Increase: Updated May 20, 2020

Florida Cases: 47,471
Increase in Cases: 527
Avg. Daily New Cases: 676.4
Hospitalized: 8,681
Total People Tested: 772,669
Increase in Tests: 55,507
Percent Positive: 6.1%
Florida Deaths: 2,096
Increase in Deaths: 44



Data Source: Florida Department of Health COVID-19 Dashboard

Florida Initial Unemployment Claims Numbers March/April

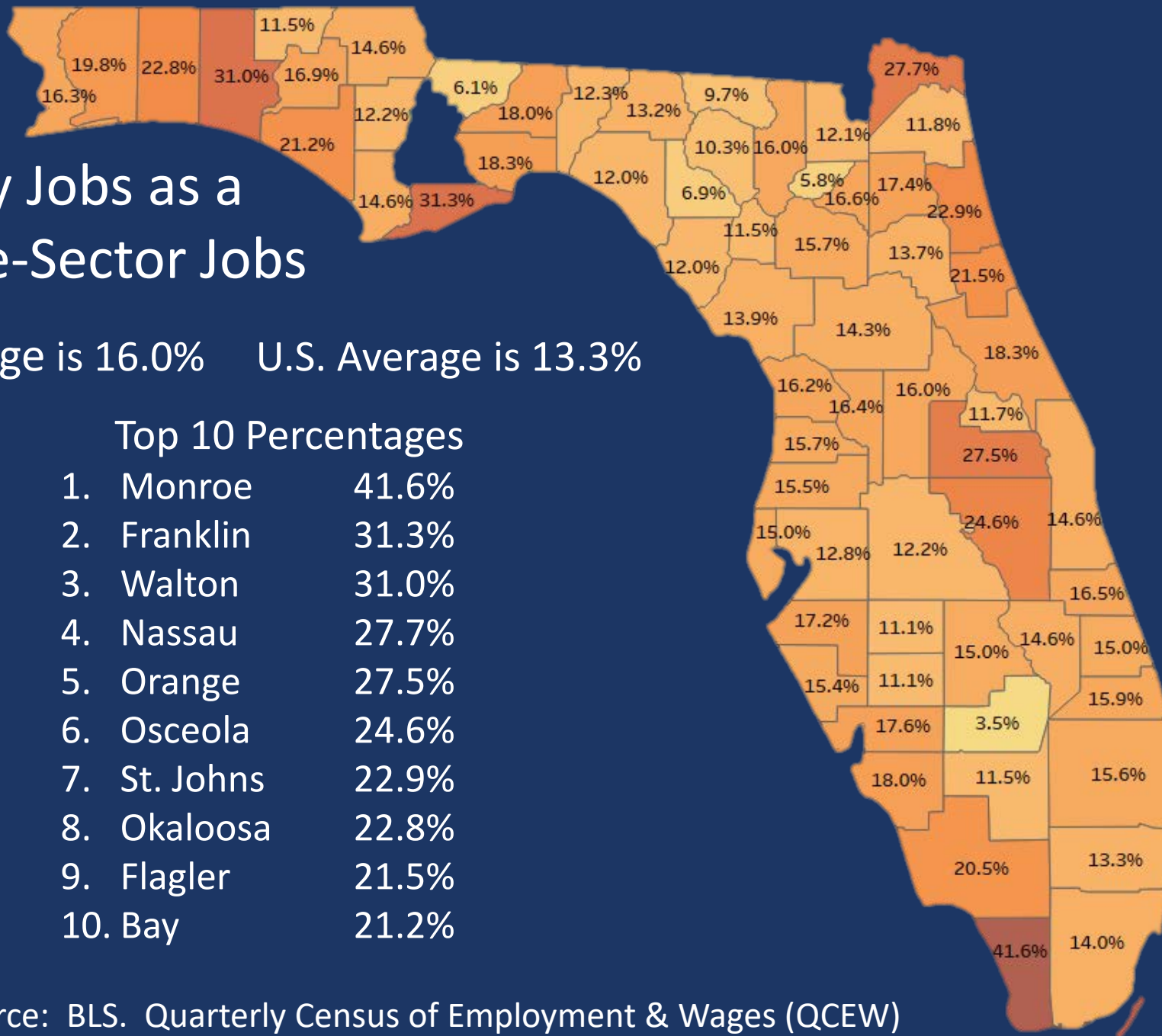


Leisure & Hospitality Jobs as a Percent of Total Private-Sector Jobs

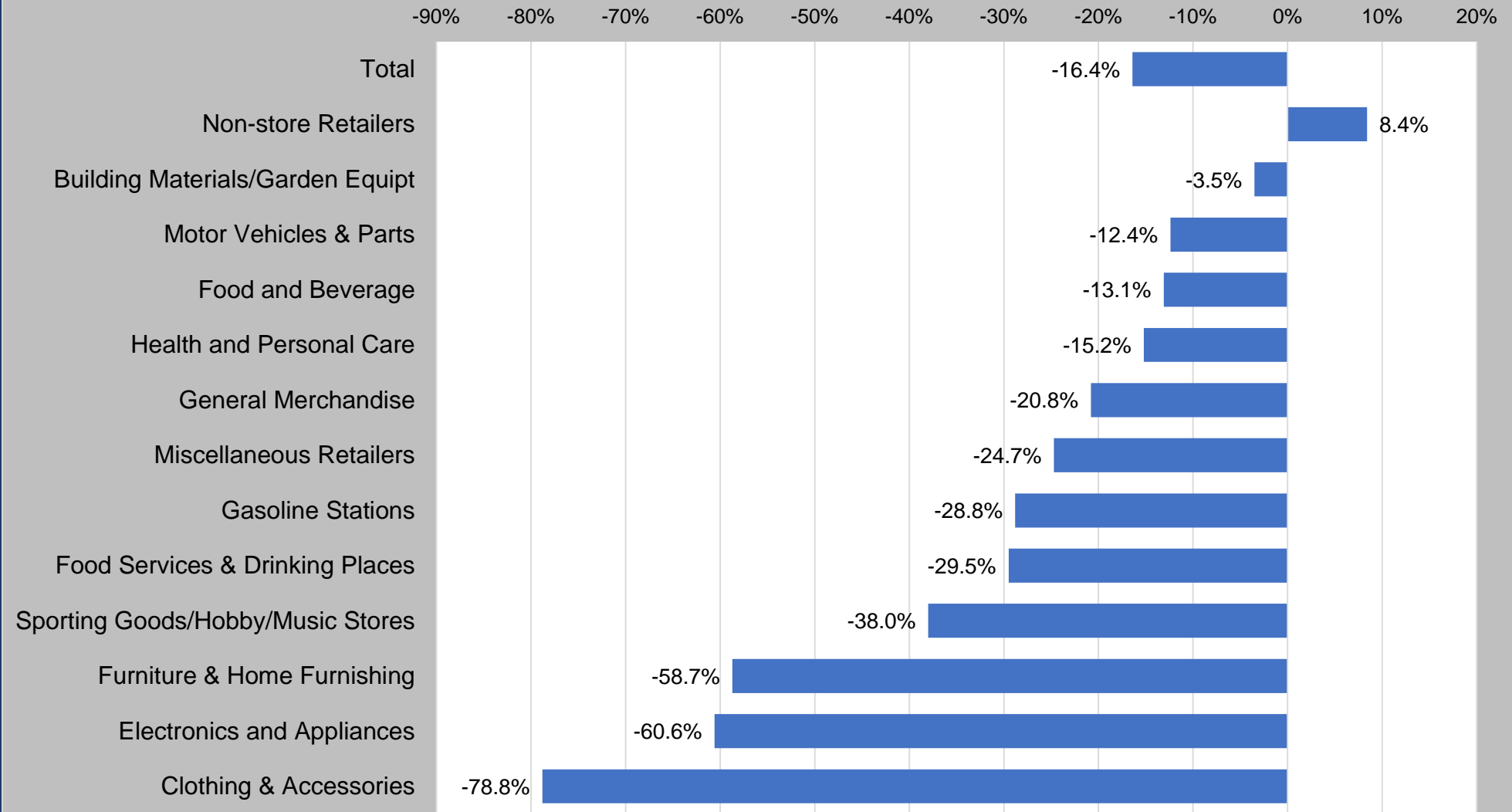
Florida Average is 16.0% U.S. Average is 13.3%

Top 10 Percentages

1. Monroe	41.6%
2. Franklin	31.3%
3. Walton	31.0%
4. Nassau	27.7%
5. Orange	27.5%
6. Osceola	24.6%
7. St. Johns	22.9%
8. Okaloosa	22.8%
9. Flagler	21.5%
10. Bay	21.2%



U.S. Retail Store Sales - Percent Change March to April





State Sales Tax Receipts by Industry

Rank	Category	Annual Avg Receipts 2018-19 \$Billion	Avg Percent 2018-19
1	Automotive Dealers	4.00	14.4%
2	General Merchandise Stores	3.71	13.3%
3	Restaurants and Catering Services	2.74	9.8%
4	Lease or Rental of Commercial Real Property	1.91	6.8%
5	Hotel/Motel Accommodations	1.72	6.2%
6	Food & Beverage Stores	1.34	4.8%
7	Building Materials Dealers	1.31	4.7%
8	Wholesale Dealers	1.09	3.9%
9	Amusement & Recreation Services	1.05	3.8%
10	Apparel & Accessory Stores	1.01	3.6%
11	Manufacturing	0.75	2.7%
17	Consumer Electronics, Computers, Music Stores	0.63	2.3%
18	Home Furniture, Furnishings & Equipment	0.59	2.1%
19	Utilities, Electric, Gas, Water, Sewer	0.56	2.0%
20	Rental of Tangible Personal Property	0.41	1.5%
21	Automotive Accessories & Parts	0.37	1.3%
22	Automobile Repair & Services	0.35	1.2%
	Total	23.55	84.4%

Data Source:
Florida
Department of
Revenue